

Injury attendances to Trafford General Hospital Emergency Department

July 2010 to June 2011

This report summarises recorded injury attendances to Trafford General Emergency Department (ED) between July 2010 and June 2011.

Between July 2010 and June 2011 there were 55,267 injury attendances to Trafford General ED. Females accounted for just over half (51%) of all attendances. The month with the highest injury attendances was September (n=5,038) with February (n=4,041) having the lowest attendances (**Figure 1**). The majority of attendances were recorded as other accident (95%). Road traffic collisions (RTC) accounted for 2% of all injury attendances, as did sports injury (**Table 1**).

For all injuries the highest proportion of attendances were for persons aged 20 to 34 (21%) and 5 to 19 years (19%) (**Figure 2**). Nearly four in ten (38%) of RTC attendees were aged 20 to 34 years (**Figure 3**).

Table 2 shows the ethnicity of attendees to Trafford General ED. Over four-fifths (85%) were white.

The disposal of a patient can give an indication of the severity of the injuries sustained. Over two-fifths (42%) of attendees were discharged, nearly four in ten (36%) were referred and 13% were admitted to hospital (**Table 3**). Over two-thirds (68%) of RTC attendees were discharged. Over half (54%) of sports injury attendees were discharged, while over a quarter (27%) of deliberate self-harm (DSH) attendees were admitted. (**Table 4**).

Table 5 shows the arrival methods of attendances at Trafford General ED. Over four-fifths (84%) of attendees arrived by other means, whilst 16% arrived by ambulance.

Table 6 shows assault attendances to Trafford General ED. Nearly three-quarters (74%) of assault attendees were male, and two-fifths (40%) were aged 20 to 34 years. Nearly a third (31%) of assault attendees arrived at the ED by ambulance, and three in ten (30%) of assault attendances occurred on weekend nights.

Figure 4 (a-d) shows crude rates of attendance at Trafford General ED by area of residence, in this case Middle Super Output Area (MSOA). The MSOAs with the highest crude rates are indicated beneath each figure.¹

¹ Population figures are drawn from mid-2008 population estimates from the Office for National Statistics.

Figure 1: Trafford General ED: Total injury attendances by gender and month, July 2010 to June 2011

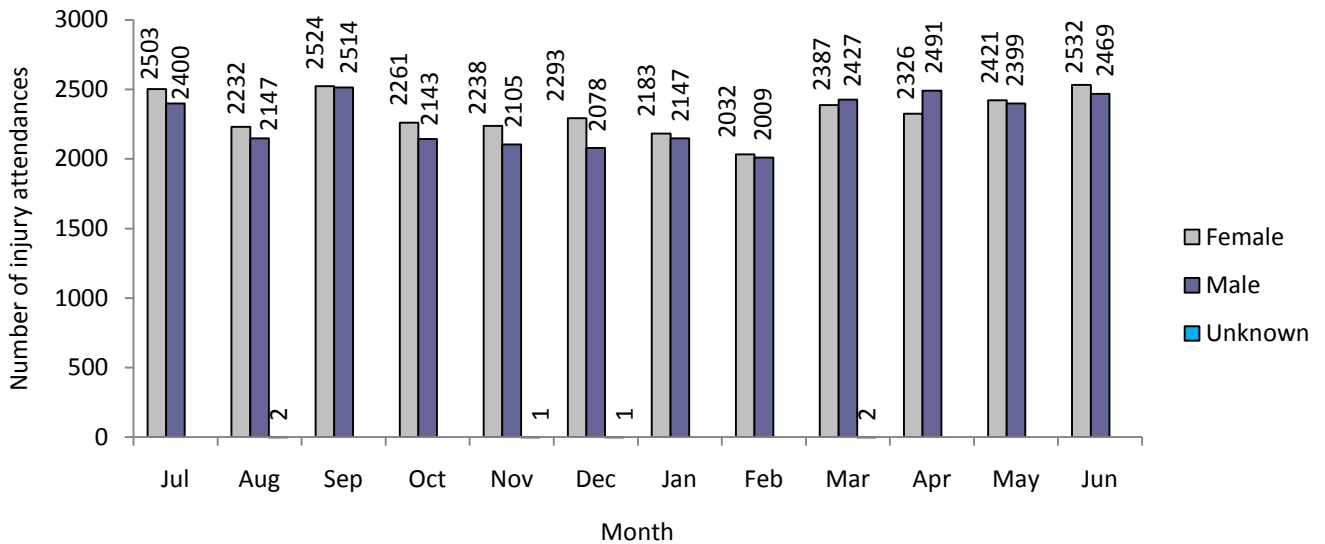


Table 1: Trafford General ED: Total injury attendances by injury group and month, July 2010 to June 2011*

Injury group	Jul	Aug	Sep	Oct	Nov	Dec	Jan	Feb	Mar	Apr	May	Jun	Total	%
Other accident	4674	4162	4746	4130	4077	4166	4098	3831	4529	4531	4521	4808	52273	95
RTC	83	98	116	118	118	130	95	97	119	116	131	80	1301	2
Sports injury	87	72	109	93	87	28	60	52	99	80	72	45	884	2
Assault	32	33	44	38	39	32	34	31	44	44	46	33	450	1
DSH	27	16	23	25	23	16	43	30	25	46	50	35	359	1
Total	4903	4381	5038	4404	4344	4372	4330	4041	4816	4817	4820	5001	55267	100

*Percentages may not total 100 due to rounding.

Figure 2: Trafford General ED: Total injury attendances by age group and month, July 2010 to June 2011

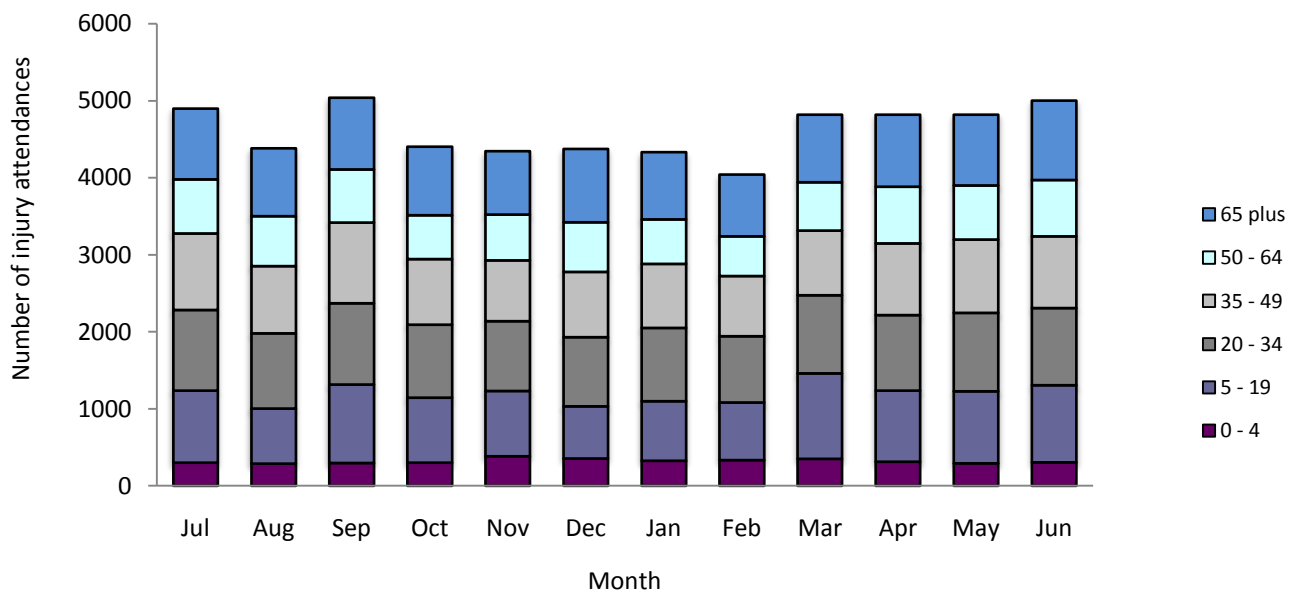


Figure 3: Trafford General ED: Total injury attendances by age group and injury group (excluding other accident), July 2010 to June 2011

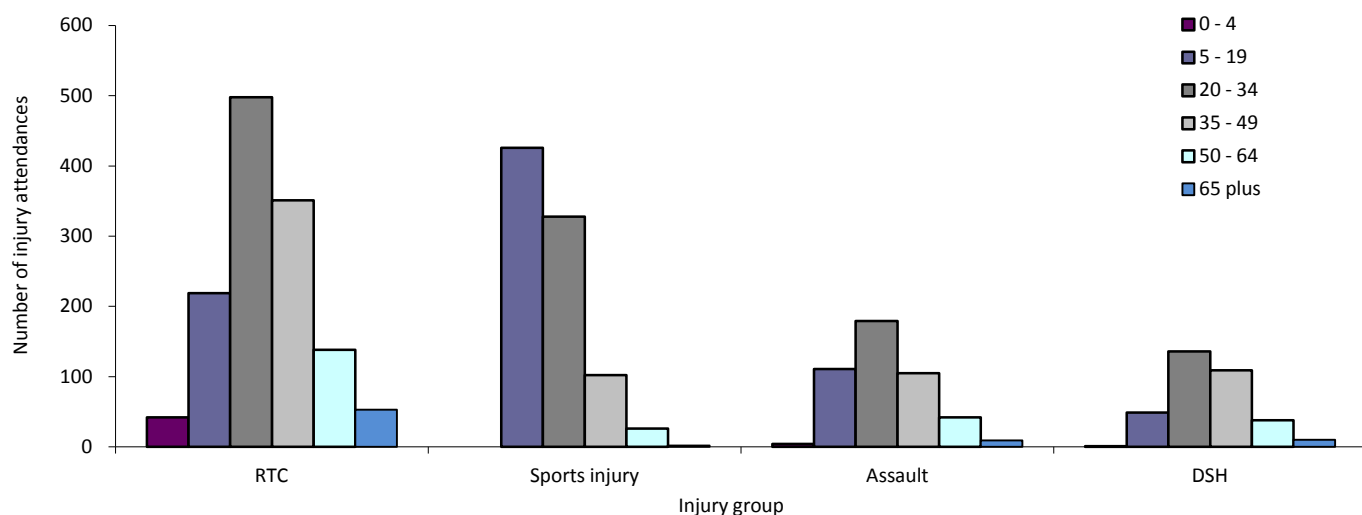


Table 2: Trafford General ED: Total injury attendances by ethnicity and month, July 2010 to June 2011²³

Ethnicity	Jul	Aug	Sep	Oct	Nov	Dec	Jan	Feb	Mar	Apr	May	Jun	Total	%
White	4137	3788	4254	3781	3683	3694	3647	3435	4123	4092	4112	4311	47057	85
Not stated	222	162	215	151	164	192	172	108	144	134	138	142	1944	4
Not known	173	96	168	93	99	74	85	129	144	154	129	76	1420	3
Pakistani	93	72	101	93	92	108	97	80	90	103	126	119	1174	2
Other ethnic group	74	70	74	57	82	83	80	86	70	81	91	80	928	2
Black	72	56	66	71	76	68	77	59	89	81	68	93	876	2
Indian	57	53	66	69	61	68	78	54	66	70	62	76	780	1
Mixed	38	52	47	51	51	42	56	53	53	68	59	61	631	1
Asian other	17	16	26	21	23	26	19	21	15	18	23	24	249	0
Chinese	14	10	***	10	7	***	***	9	***	***	***	***	156	0
Bangladeshi	6	6	***	7	6	***	***	7	***	***	***	***	52	0
Total	4903	4381	5038	4404	4344	4372	4330	4041	4816	4817	4820	5001	55267	100

Table 3: Trafford General ED: Total injury attendances by method of disposal and month, July 2010 to June 2011⁴

Disposal	Jul	Aug	Sep	Oct	Nov	Dec	Jan	Feb	Mar	Apr	May	Jun	Total	%
Discharged	2055	1813	2326	1999	1705	1824	1702	1720	1999	1913	2039	2089	23184	42
Referral/ follow-up	1961	1485	1654	1607	1672	1521	1720	1534	1812	1665	1619	1710	19960	36
Admitted	623	581	594	575	655	689	642	534	599	571	570	596	7229	13
Other	264	502	464	223	312	338	266	253	406	668	592	606	4894	9
Total	4903	4381	5038	4404	4344	4372	4330	4041	4816	4817	4820	5001	55267	100

² Please note that all numbers less than five have been suppressed in line with patient confidentiality and if there is only one number <5 in a category then two numbers will be suppressed at the next level.

³ White=Irish, British, other white background; Mixed = white and black, white and Asian, mixed any other; Black=African, Caribbean, other black.

⁴ Admitted=admitted to hospital/became a lodged patient of the same health care provider; Discharged=discharged - did not require any follow up treatment; Referral/follow-up=discharged - follow up treatment to be provided by GP, referred to ED clinic, referred to fracture clinic, referred to other out-patient clinic, referred to other health care professional; Other=died in department, left department before being treated, left department having refused treatment, other.

Table 4: Trafford General ED: Total injury attendances by method of disposal and injury group, July 2010 to June 2011*

Disposal	Assault		DSH		Other accident		RTC		Sports injury		Total	
	n	%	n	%	n	%	n	%	n	%	n	%
Admitted	29	6	98	27	7071	14	25	2	6	1	7229	13
Discharged	188	42	37	10	21594	41	887	68	478	54	23184	42
Other	76	17	100	28	4573	9	71	5	74	8	4894	9
Referral/ follow-up	157	35	124	35	19035	36	318	24	326	37	19960	36
Total	450	100	359	100	52273	100	1301	100	884	100	55267	100

*Percentages may not total 100 due to rounding.

Table 5: Trafford General ED: Total injury attendances by mode of arrival and month, July 2010 to June 2011

Arrival mode	Jul	Aug	Sep	Oct	Nov	Dec	Jan	Feb	Mar	Apr	May	Jun	Total	%
Other	4151	3641	4300	3678	3628	3580	3612	3332	4095	4074	4136	4278	46505	84
Ambulance	752	740	738	726	716	792	718	709	721	743	684	723	8762	16
Total	4903	4381	5038	4404	4344	4372	4330	4041	4816	4817	4820	5001	55267	100

Table 6: Trafford General Hospital ED: Assault attendances by gender, mode of arrival, age group and day/time of attendance, July 2010 to June 2011*

Injury type	Assault attendees (n=450)		All injuries % (n=55,267)
	n	%	%
Gender			
Female	118	26	51
Male	332	74	49
Mode of arrival			
Ambulance	141	31	16
Other	309	69	84
Age group			
0 - 4	***	1	7
5 - 19	111	25	19
20 - 34	179	40	21
35 - 49	105	23	19
50 - 64	42	9	14
65 plus	***	2	20
Day & time			
Weekend nights**	137	30	6
Weekend days	103	23	20
Weekdays	210	47	73

* Percentages may not total 100 due to rounding.

** 8pm to 4am, Friday night/Saturday morning; Saturday night/Sunday morning; Sunday night/Monday morning.

Author: Ian Warren, Published: September 2011

For further information please contact: Centre for Public Health, Research Directorate, Liverpool John Moores University, 2nd Floor, Henry Cotton Building, 15-21 Webster Street, Liverpool, L3 2ET.

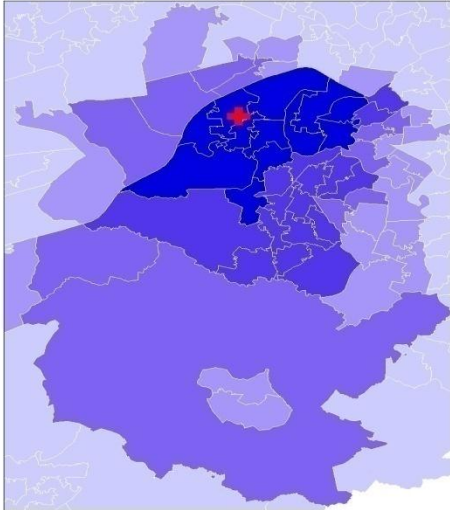
Tel: 0151 231 4513 or Email: i.j.warren@ljmu.ac.uk

Website: www.tiig.info (data requests should be made through the website)

Figure 4a,b,c,d: Middle Super Output Area of residence for injury attendances to Trafford General ED. Quintiles of crude rates per 1,000 population, July 2010 to June 2011

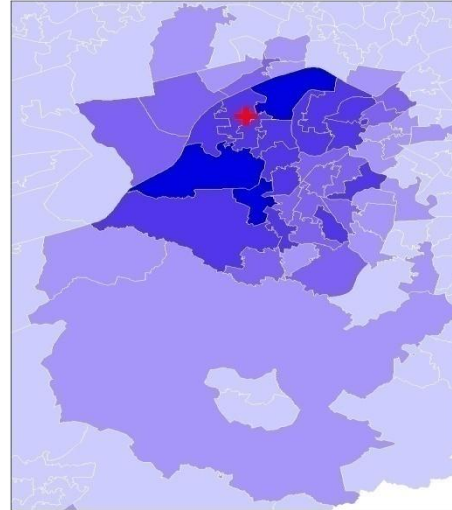
a) All injury attendances: quintiles of crude rates per 1,000 population b) RTC: quintiles of crude rates per 1,000 population

✚ Trafford General ED



1 (0.00 – 4.41)	
2 (4.42 – 15.27)	MSOA E02001275 (472.73)
3 (15.28 – 51.10)	MSOA E02001267 (392.81)
4 (51.11 – 182.35)	MSOA E02001266 (366.24)
5 (182.36 – 452.73)	MSOA E02001260 (346.63)

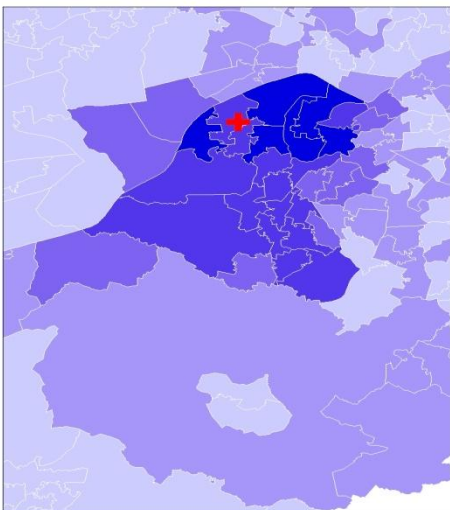
✚ Trafford General ED



1 (0.00 – 0.33)	
2 (0.34 – 1.06)	MSOA E02001275 (12.23)
3 (1.07 – 3.26)	MSOA E02001260 (9.71)
4 (3.27 – 6.23)	MSOA E02001277 (8.85)
5 (6.24 – 12.23)	MSOA E02001267 (6.23)

c) Sports injury: quintiles of crude rates per 1,000 population

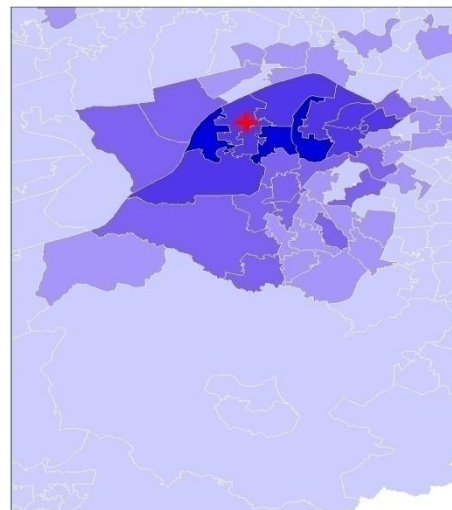
✚ Trafford General ED



1 (0.00 – 0.10)	
2 (0.11 – 0.80)	MSOA E02001260 (6.65)
3 (0.81 – 2.35)	MSOA E02001266 (5.98)
4 (2.36 – 3.94)	MSOA E02001267 (5.07)
5 (3.95 – 6.65)	MSOA E02001265 (4.83)

d) Assault: quintiles of crude rates per 1,000 population

✚ Trafford General ED



1 (0.00 – 0.08)	
2 (0.09 – 0.49)	MSOA E02001266 (5.82)
3 (0.50 – 1.67)	MSOA E02001267 (4.06)
4 (1.68 – 3.52)	MSOA E02001265 (3.96)
5 (3.53 – 5.82)	MSOA E02001269 (3.52)